

West Sussex LDC Newsletter

Spring 2007



LDC News

STOP THE PRESS: The announcement regarding variant CJD and root canal treatment came as a complete surprise to everyone (thanks for informing the media before the profession, Barry). Our dental advisers are working closely with the PCT to make sense of this latest edict and hope that some sort of mechanism can be devised to compensate practitioners for the inevitable extra expense incurred in destroying reamers and files, etc. after single use. In the meantime we can only recommend you follow the published guidelines. The letter can be found on our website on the 'Latest News' page.

“Advice for dentists on re-use of endodontic instruments and variant Creutzfeldt-Jakob Disease (vCJD)”

Inside This Issue

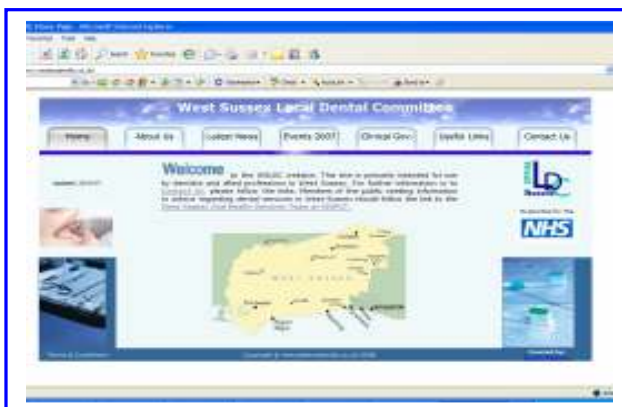
- 1 LDC News
- 2 Message from the Chair
- 3 Low Priority Procedures
- 4 Referral Form
- 5 Orthodontic Sub Group
- 6 X-Ray Charges
- 7 Key Skills
- 8 LDC Conference
- 9 BDA
- 10 Forthcoming Meetings

Message from the Chair

Happy nGDS anniversary! (Voice heavy with irony).

Hope you all managed to make it through the first year with UDA targets more or less intact – now all we have to do is survive another two more years and we can start all over again!

Nobody seems to have any clear idea what life will be like post 2009, but I have a horrible feeling it won't be any better out there in GDP-land if the DH has its evil way. All we can hope for is a return to sanity and a contract which actually serves everybody's best interests for a change. Any ideas?



Low Priority Procedures

After much debate and negotiation the PCT have now agreed in principle that the introduction of the LPP list was insensitively managed and needs to incorporate some flexibility to cater for those patients who genuinely require management within secondary care, but would otherwise be excluded by the list. The Patients with Individual Needs (PIN) panel will now have proper dental representation and it is anticipated that the exceptions protocol drawn up by MFU consultants and OHAG will facilitate appropriate referrals and bypass PIN for the most pressing cases.

*West Sussex PCT
accepts the LPP list
was managed
"insensitively".*

However, for the system to succeed we need to exercise a little care and restraint over our referrals. This means that straightforward extractions on fit, non-medically compromised patients should not - as a rule - be treated anywhere but in general practice.

At the moment, some of the large numbers of patients being referred for such procedures and rejected under LPP are being fielded by the Community Dental Service, funded by the PCT. We hope in the longer term to establish a minor oral surgery referral service along the lines of DpwSI operated by suitably experienced GDP's carrying out difficult extractions, etc. In the meantime, please think carefully before referring simple extractions.

Referral Form

Whilst we're on the subject, the LDC has worked with OHAG on redesigning the general purpose referral form to make it more user-friendly and also easier for those who have to triage them at the referral management centre. You'll be able to upload the new form onto a computer and e-mail it if you wish. Details will follow in due course.

Orthodontic Sub Group

This is a spin-off of OHAG whose brief is to draw up policies for provision of orthodontic services in the short, medium, and long-term. The first meeting is 17th April 2007. Clearly there are issues regarding orthodontic services in the county and it is hoped these will be addressed by this committee. An LDC representative will attend and report back.



X-Ray Charges

Despite our best efforts the Royal West Sussex Trust remains adamant that the policy of charging referring dentists for radiographs taken at St. Richard's Hospital is perfectly proper and legitimate, because such services are not covered by, and therefore not funded under, their contracts with the PCT. Apparently Queen Victoria East Grinstead has started charging already and Worthing is likely to follow. This most profoundly affects our colleagues in specialist practice, particularly those orthodontists who lack the facility to take OPTs and cephs in house. The best advice is to reduce the impact by making a deal with local practices that have appropriate equipment and spare capacity. If there is anyone out there who might be able to help - please contact us.

Key Skills

In response to the GDC guidelines regarding clinical governance in dental practice, the PCT propose to make completion of the Key Skills programme mandatory for all contracted practitioners. This is a comprehensive set of exercises covering everything from cross infection control, to health and safety, and comfortably meets all the GDC requirements. To facilitate this, the PCT will provide all course material and CDs and there will be supporting road shows around the county next autumn. CPD points will be awarded (and the LDC will be actively campaigning for compensatory UDAs as well).

LDC Conference

Birmingham is the venue this year (6th June), which is Eddie Crouch's manor and promises to be a lively and controversial debate for a change. We understand Rosie Winterton has already given her apologies (sensible girl) and the LDC will decide at the next meeting whether to submit a motion, but will be sending delegates as ever. A full report will be provided in the next newsletter

BDA

Finally, a gentle plug for the British Dental Association (BDA). The LDC has no affiliation, but recognises that the BDA is our only credible voice; the more united and representative of the profession it is perceived, the louder that voice will be. The GDPC is currently in discussion with DoH regarding the future of nGDS, post 2009 and various proposals have been tabled and rejected, including so-called standard and enhanced contracts (core service by another name). The view is that the contract in its present form will not endure and whatever replaces it is unlikely to be favourable without strong input and solidarity from the profession.

Forthcoming Meetings

West Sussex LDC meets every two months. Meetings are usually held on a Wednesday at The Roundabout Hotel in West Chiltington.

The Executive Committee meets monthly at various locations.

OHAG meets quarterly. All meeting dates can be found on the web site 'www.westsussexldc.co.uk/events2007.htm'

LDC Executive Committee	23 May 2007
LDC Executive Committee	27 June 2007
LDC Committee	27 June 2007
OHAG	24 April 2007
	21 June 2007

APRIL 2007

S	M	T	W	T	F	S
1	2	3	4	5	6	7
8	9	10	11	12	13	14
15	16	17	18	19	20	21
22	23	24	25	26	27	28
29	30					

MAY 2007

S	M	T	W	T	F	S
		1	2	3	4	5
6	7	8	9	10	11	12
13	14	15	16	17	18	19
20	21	22	23	24	25	26
27	28	29	30	31		

JUNE 2007

S	M	T	W	T	F	S
					1	2
3	4	5	6	7	8	9
10	11	12	13	14	15	16
17	18	19	20	21	22	23
24	25	26	27	28	29	30